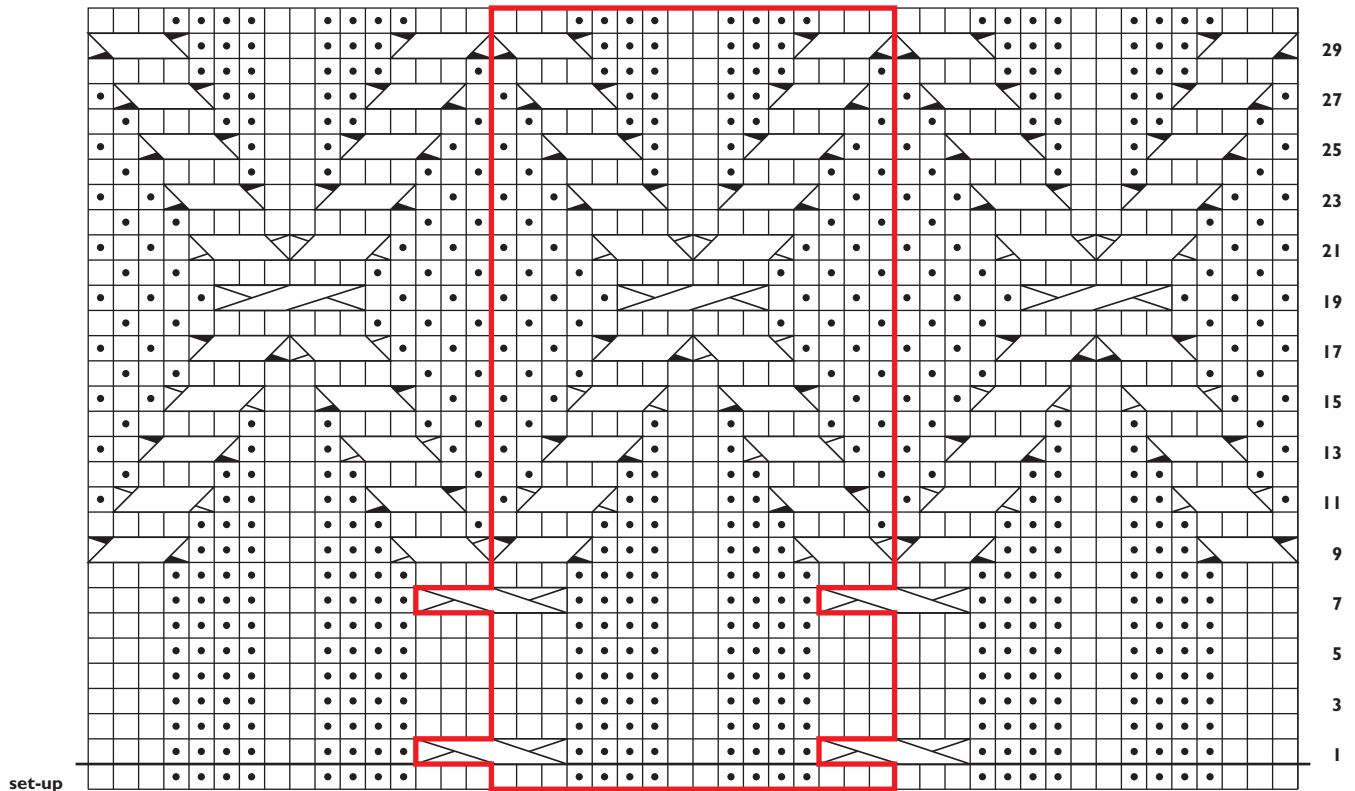


ARAN PULLOVER

design by KRISTIN NICHOLAS

This chart had no errors as printed on page 68 of the Winter 2005 issue, but some readers found the shading difficult to read. Here is a larger version of the chart in which the shaded symbols are more distinct.


Cable



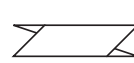
 k on RS; purl on WS

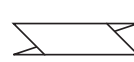
 p on RS; knit on WS

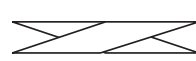
 pattern repeat

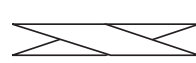
 sl 1 st onto cn and hold in back,
k3, p1 from cn

 sl 3 sts onto cn and hold in front,
p1, k3 from cn

 sl 1 st onto cn and hold in back,
k3, k1 from cn

 sl 3 sts onto cn and hold in front,
k1, k3 from cn

 sl 3 sts onto cn and hold in back,
k3, k3 from cn

 sl 3 sts onto cn and hold in front,
k3, k3 from cn