

STAFF SCARVES PROJECTS



WILD CHERRY TRIANGULAR SCARF

Pam Allen, editor

I have a collection of scarves that's spilling out of the hall closet. My current favorite is a small crocheted shawl shaped as a wide, shallow triangle—an easy shape to wear with coats and jackets, and a pleasant change from the usual long, skinny rectangle. For the staff project, I decided to make a knitted version in a soft, drapey, merino bouclé with lovely color modulations and hint of texture. I worked it in smooth, stockinette stitch to keep the emphasis on the yarn design. I began with nine stitches at the point and worked yarnover increases along the edges on every row, just inside a three garter-stitch border. The scarf was finished in no time flat and it's pretty enough that I don't mind "putting it away" on a favorite chair.

Finished Size 46" (117 cm) wide across top edge and 13½" (34.5 cm) deep from top edge to base of point.

Yarn Cherry Tree Hill Oceania (99% merino, 1% Lurex; 1440 yd [1317 m]/400 g): wild cherry, 1 skein.

Needles Size 6 (4 mm): straight. Adjust needle size if necessary to obtain the correct gauge.

Notions Tapestry needle.

Gauge 17½ sts and 28 rows = 4" (10 cm) in St st.

Note: In the yarn and size shown, this project uses about ½ of a skein. Make several for gifts, or make a larger shawl by continuing in patt until there is just enough yarn left to BO (4 times the width across the top of your shawl), then BO all sts.

CO 9 sts.

Row 1: (RS) K3, yo, k3, yo, k3—11 sts.

Row 2: (WS) K3, yo, p5, yo, k3—13 sts.

Row 3: K3, yo, k7, yo, k3—15 sts.

Row 4: K3, yo, p9, yo, k3—17 sts.

Cont in this manner, working a yo after the first k3 sts and before the last k3 sts of every row, and working sts between yarnovers in St st, for 92 more rows—201 sts; piece should measure about 13½" (34.5 cm) from beg. Loosely BO all sts. Block lightly.



CONTEMPLATING NEGATIVE SPACE

Ivy Bigelow

This bulky, thick-and-thin yarn is just right for sculptural effects. With its shaped hole—an opening or a void, depending on perspective—this scarf reminds me to look for art every day.

Finished Size 5½" (14 cm) wide and 49" (124.5 cm) long.

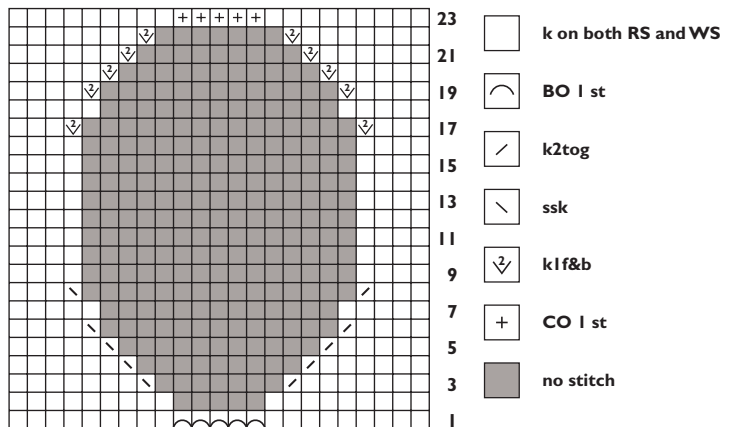
Yarn Schulana Christina (80% wool, 20% nylon: 110 yd [100 m]/50 g): #13 burgundy, 2 balls. Yarn distributed by Skacel.

Needles Size 10 (6 mm).

Notions Size G/6 (4.25-mm) crochet hook; tapestry needle.

Gauge 17 sts and 27 rows = 4" (10 cm) in garter st.

CO 23 sts. Work 13 rows garter st. Work Row 1 of Hole chart as foll: K9, join new ball of yarn, BO 5 sts as indicated on chart, knit to end—9 sts at each side. Working each side separately, work through Row 22 of chart—9 sts each side. Break off yarn for the second group of sts when RS is facing. Work across Row 23 with the yarn from the first group as foll: K9, use the backward loop method to CO 5 sts, k9—23 sts. Cont in garter st until piece measures 49" (124.5 cm) from beg. BO all sts. With crochet hook and rem yarn, work 1 rnd of single crochet evenly around interior edge of hole to stabilize (about 54 sc), joining first and last sc with a slip st. Break yarn and pull tail through last loop to fasten off. Weave in ends.



BASKET WEAVE SCARF

Ann Budd, Managing Editor

I love long, narrow scarves. For this scarf, I cast on just enough stitches to work a single balanced repeat of the Double Basket Pattern from Barbara Walker's *Treasury of Knitting*, and repeated the 18-row pattern until I used up two balls of yarn. The interplay of horizontal and vertical ribs produces an undulating, curved effect that adds complicated texture to the relatively simple stitch pattern.

Finished Size About 4½" (11.5 cm) wide and 78" (198 cm) long.

Yarn Louet Gems Topaz (100% merino; 175 yd [160 m]/100 g): #11 cherry red, 2 skeins.

Needles Size 8 (5 mm). Adjust needle size if necessary to obtain the correct gauge.

Notions Tapestry needle.

Gauge 18 sts and 24 rows = 4" (10 cm) in St st; 28 sts = 4½" (11.5 cm) wide in double basket patt.

CO 28 sts. Work double basket patt as foll:

Rows 1 and 5: (RS) K11, p2, k2, p2, k11.

Rows 2 and 6: P1, k8, p2, [k2, p2] 2 times, k8, p1.

Rows 3 and 7: K1, p8, [k2, p2] 2 times, k2, p8, k1.

Rows 4 and 8: P11, k2, p2, k2, p11.

Row 9: Knit.

Rows 10 and 14: [P2, k2] 2 times, p12, [k2, p2] 2 times.

Rows 11 and 15: [K2, p2] 2 times, k2, p8, [k2, p2] 2 times, k2.

Rows 12 and 16: [P2, k2] 2 times, p2, k8, [p2, k2] 2 times, p2.

Rows 13 and 17: [K2, p2] 2 times, k12, [p2, k2] 2 times.

Row 18: Purl.

Rep Rows 1–18 until only enough yarn remains to BO, ending with Row 8 or 17. BO all sts. Weave in loose ends. Block lightly if desired.



GARTER-STITCH BALACLAVAS Mary Jane Muckelstone, photostylist

When my house burned down I couldn't concentrate to knit my favorite Fair Isle patterns, so for my two scarves, I chose luscious yarns and the simplest of stitches, with a slant!

Finished Size Variegated scarf: 10" (25.5 cm) wide and 62" (157.5 cm) long, before seaming. Solid scarf: 11¼" (28.5 cm) wide and 84" (213 cm) long from tip to top of longest points, not including tassels.

Yarn Variegated scarf: Alchemy Yarns Alpaca Pure (100% superfine alpaca; 292 yd [267 m]/100 g): #57M heart (red, orange, yellow variegated), 4 balls. Solid scarf: Valley Yarns Wensleydale (100% Wensleydale wool; 174 yd [161 m]/100 g): #17 raspberry, 6 balls. Wensleydale distributed by Webs.

Needles Size 5 (3.75 mm). Adjust needle size if necessary to obtain the correct gauge.

Notions Tapestry needle; small amount of contrasting scrap yarn; piece of cardboard about 6" (15 cm) wide and 8" (20.5 cm) long for making tassels.

Gauge Variegated scarf: 20 sts and 38 rows = 4" (10 cm) in garter st with Alpaca Pure. Solid scarf: 17½ sts and 36 rows = 4" (10 cm) in garter st with Wensleydale.

CO 3 sts. Knit 1 row. **First point:**

Row 1: Sl 1, M1 (see Glossary), knit to end—1 st inc'd.

Row 2: Sl 1, knit to end of row.

Rep these 2 rows 71 more times, ending with Row 2—75 sts; piece should measure about 15–16" (38–40.5 cm) from CO along straight selvedge, and 23½" (59.5 cm) from CO along selvedge with incs. Mark each end of the last row with scrap yarn. **Center section:** Cont as foll:

Row 1: Sl 1, M1, knit to end—1 st inc'd.

Row 2: Sl 1, k2tog, knit to end—1 st dec'd; 75 sts.

Rep Rows 1 and 2 until piece measures about 52" (132 cm) from marked row, ending with Row 2. **Second point:**

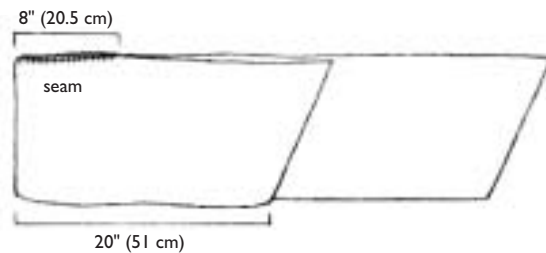
Row 1: Sl 1, k2tog, knit to end—1 st dec'd.

Row 2: Sl 1, knit to end.

Rep these 2 rows 72 more times—2 sts rem. K2tog—1 st rem. Fasten off.

Finishing

Fold piece about 20" (51 cm) from short side of one point as shown in illustration below. With yarn threaded on a tapestry needle and using the mattress st, sew both layers along one selvedge, beg at fold and sewing for 8" (20.5 cm) to form hood; this seam will run from the rear of the top of the head to the nape of the neck when the scarf is worn. **Reinforce seam:** With RS facing, pick up and knit 1 st in center of the end of the seam farthest from the fold (at nape of the neck), then pick up and knit 1 st just beyond the seam—2 sts. Turn, k2, pick up and knit 1 st just beyond seam—3 sts. Turn, k1, M1, k2—4 sts. Turn, k1, M1, k3—5 sts. BO all sts. **Tassels:** Make 2 tassels, each 8" (20.5-cm) high by wrapping the yarn around the long dimension of the cardboard. With yarn threaded on a tapestry needle, attach these tassels to points at beg and end of scarf. Make one tassel 6" (14-cm) high by wrapping the yarn around the short dimension of the cardboard, and attach smaller tassel to point of hood where seam began. Weave in loose ends.



ORENBURG-STYLE SCARF Susan Sternlieb, editorial assistant

In the middle of winter, working on a light, airy, pink scarf brought warmth to my hands as well as thoughts of spring tulips. What could be better? I chose a project from *Gossamer Webs* by Galina Khmeleva (Interweave, 1998), using the Peas stitch in the center and the Sample

Border along the edges.

Finished Size Approximately 75" (190.5 cm) long and 12" (30.5 cm) wide, measured from the tips of the points.

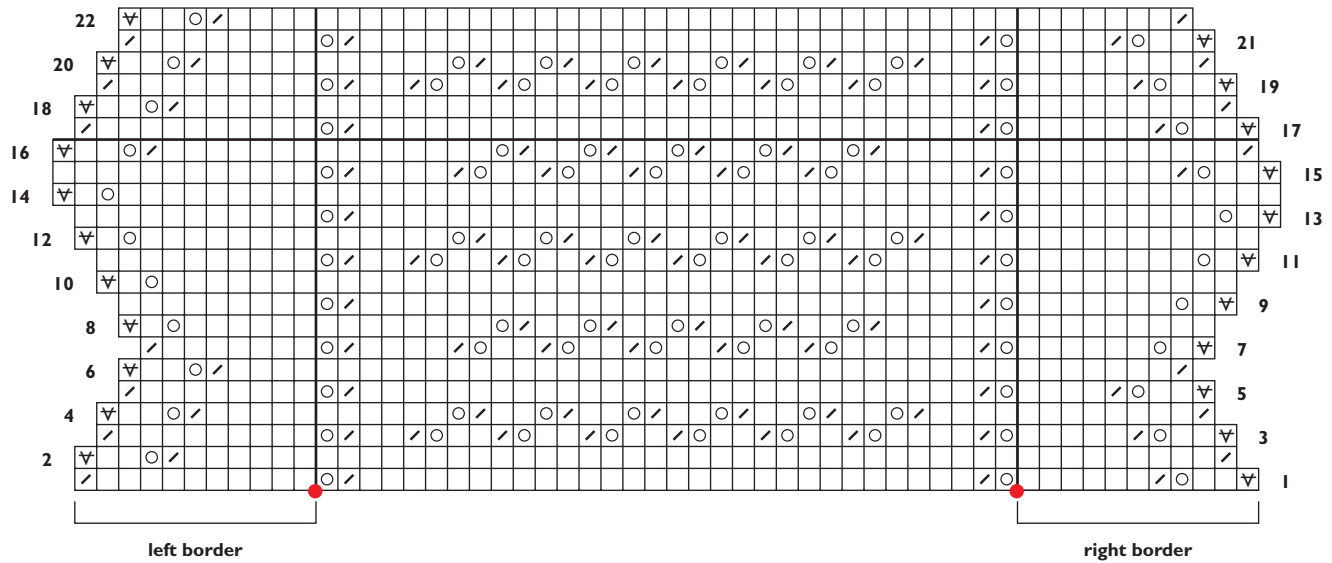
Yarn K1C2 Douceur et Soie (70% mohair, 30% silk; 225 yd [205 m]/25 g): #8343 soft sunrise (pink), 3 balls.

Needles Size 5 (3.75 mm). Adjust needle size if necessary to obtain the correct gauge.

Notions Tapestry needle; small amount of smooth, contrasting scrap yarn for invisible (provisional) cast-on; markers (m).

Gauge 16½ sts and 27 rows = 4" (10 cm) in pattern from Center chart, after firm blocking.

Center



Notes

Scarf is worked in garter stitch-based lace; all blank squares on the charts represent knit stitches on both right-side and wrong-side rows.

Slipped stitches are always slipped purlwise (pw) with yarn in front (wyf).

The side borders are worked at the same time as the center section of the scarf. Lace patterning for the right border is worked on right-side (RS) rows, and for the left border on wrong-side (WS) rows.

The yarnovers at each end of the center section have a tendency to slip past the stitch markers. Make sure to correct their positions if they are on the wrong side of the markers when you come to them, and check that there are always 32 stitches in the center between the markers.

Lower Border

Using an invisible (provisional) method, CO 7 sts. *Set-up row 1:* (RS) Sl 1 pw wyf (see Notes), k1, yo, k5—8 sts. *Set-up row 2:* Sl 1 pw wyf, k7. Do not rep set-up rows. Beg with Row 1, work Rows 1–16 of Border chart 4 times, ending with Row 16—8 sts; 64 rows of chart completed.

Turn Corner 1:

Short-row 1: (RS) Sl 1, k1, yo, k5, do not work last st, turn, sl first st, knit to end.

Short-row 2: Sl 1, k1, yo, k5, do not work last 2 sts, turn, sl first st, knit to end.

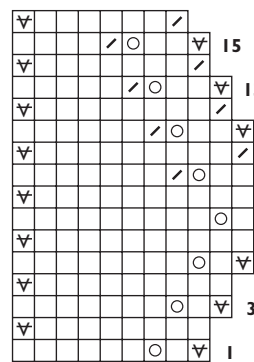
Short-row 3: Sl 1, k1, yo, k5, do not work last 3 sts, turn, sl first st, knit to end.

Short-row 4: Sl 1, k1, yo, k7, do not work last 2 sts, turn, sl first st, knit to end.

Next row: (RS) Sl 1, k2, yo, k2tog, k7, place marker (pm), pick up and knit 32 sts along straight edge of lower border by placing needle through the front strand of each slipped selvedge st and knitting it through the back loop—44 sts; 12 right border sts, 32 picked-up sts.

Turn Corner 2: With RS still facing, pm, pick up and knit 7 sts

Border



-  knit on RS and WS
-  k2tog on RS and WS
-  yo
-  sl 1 st purlwise with yarn in front
-  stitch marker

from base of provisional CO at beg of lower border, and *at the same time* inc 1 st in picked up sts—52 sts; 8 left border sts, 32 center sts, 12 right border sts. Turn, and work short rows on sts for left border *only*, as foll:

Short-row 1: (WS) Sl 1, k1, yo, k5, do not work last st, turn, sl first st, knit to end.

Short-row 2: Sl 1, k1, yo, k5, do not work last 2 sts, turn, sl first st, knit to end.

Short-row 3: Sl 1, k1, yo, k5, do not work last 3 sts, turn, sl first st, knit to end.

Short-row 4: Sl 1, k1, yo, k7, do not work last 2 sts, turn, sl first st, knit to end.

Next row: (WS) Sl 1, k2, yo, k2tog, k7, slip marker (sl m), k32, sl m, knit to last 2 sts of right border, end k2tog—55 sts; 12 left border sts, 32 center sts, 11 right border sts.

Center Section

Beg with Row 1, rep Rows 1–16 *only* of Center chart a total of 29 times, then work Rows 17–22 once—470 rows of Center chart completed; 49 sts; 9 left border sts, 32 center sts, 8 right border sts.

Top Border

Turn Corner 3: Working on right border sts *only*, work as for Turn Corner 1 until Short-row 4 has been completed—12 right

border sts. *Next row:* (RS) Work Row 9 of Border chart to last st, sl 1, remove m, return slipped st to left needle, k2tog (last st of border with first st of center section). Turn, and work Row 10 of chart on border sts. Cont top border in patt from chart, joining top border to center section with k2tog (last st of border with next st of center section) at the end of RS border rows, and working WS border rows as shown on chart. Work Rows 11–16 of Border chart once, then rep Rows 1–16 three more times, then work Rows 1–7 once more, ending at m between the top and left border sts—21 sts; 9 left border sts, 12 sts top border sts. **Turn Corner 4:** With RS still facing, sl m, and work across 9 left border sts as k7, k2tog—20 sts; 8 left border sts, 12 top border sts.

Working on left border sts *only*, work as for Turn Corner 2 until Short-row 4 has been completed. *Next row:* (WS) Sl 1, k2, yo, k2tog, k7, remove m, k12 top border sts—24 sts total. Cut off yarn, leaving a 15" (38-cm) tail.

Finishing

Rearrange sts on 2 needles so that there are 12 sts on each needle. With tail threaded on a tapestry needle and using the Kitchener st, graft the live sts tog (*Note:* For a traditional Russian grafting method, see *Gossamer Webs* [Interweave Press, 1998] or *The Gossamer Design Collection* [Interweave Press, 2000], both by Galina Khmeleva). Weave in loose ends. Block to finished measurements.



RISK-FREE TRIAL OFFER

Discover knitwear designs that will capture your imagination.

You don't have to be a designer or a knitting pro to make beautiful knitted garments and accessories, and you don't have to hunt all over for inspiring designs.

From cover to cover, *Interweave Knits* magazine gives you great projects, from the beginner to the advanced. Every issue is packed full of captivating smart designs, step-by-step instructions, easy-to-understand illustrations, plus well-written, lively articles sure to inspire.

Take advantage of this special risk-free offer today!

www.interweave.com/go/knitsJPDC6