

GIVE ME A HANDBAG!

HANDBAGS, THOSE CATCHALLS INTO WHICH WE TOSS THE NUTS AND BOLTS OF OUR LIVES—including, sometimes, a little something on the needles—make great knitting projects. They don't require a stitch-perfect gauge or long days of knitting. You can make them big or small, sedate or jazzy, one color or many. The *Interweave Knits* staff had fun with these bags—make one, or several, or use our gallery of bags as inspiration and come up with your own design!



TIFFANY BAG Cyrene Slegona, editorial advisor

Finished Size About 13" tall and 14½" wide across top opening.

Yarn Knit One Crochet Too Paint Box (100% wool; 100 yd [91 m]/50 g): #05 blue spruce, 5 balls.

Needles Size 9 (5.5 mm): 16" circular (cir) and set of 5 double-pointed (dpn). Adjust needle size to obtain the correct gauge.

Notions Markers (m); tapestry needle.

Gauge 15 sts and 22 rnds = 4" in St st before felting.

Note

Bag begins with a hemmed top opening and is worked in the round, ending at the center of the bottom.

Bag

With cir needle, CO 100 sts. Place marker (pm) and join for working in the rnd, being careful not to twist sts. **Facing:** Knit 5 rnds. Work picot fold line for facing on next rnd as foll: *K2tog, yo; rep from * to end of rnd. Knit 4 rnds. Work holes for drawstring on next rnd as foll: *K8, [yo] twice, k2tog; rep from * to end of rnd—10 double yo holes. **Next rnd:** *Knit into front and back of next st (k1f&b), k7, k1 in double yo dropping extra wrap, k1, [k8, k1 in double yo, k1] 4 times; rep from * once more—102 sts. Knit 53 rnds, dec 2 sts evenly in last rnd—100sts. Dec for bottom of bag as foll, changing to dpn when necessary:

Rnd 1: *K8, k2tog; rep from * to end—90 sts rem.

Rnd 2: *K7, k2tog; rep from * to end—80 sts rem.

Rnd 3: *K6, k2tog; rep from * to end—70 sts rem.

Rnd 4: *K5, k2tog; rep from * to end—60 sts rem.

Rnd 5: *K4, k2tog; rep from * to end—50 sts rem.

Rnd 6: *K3, k2tog; rep from * to end—40 sts rem.

Rnd 7: *K2, k2tog; rep from * to end—30 sts rem.

Rnd 8: *K1, k2tog; rep from * to end—20 sts rem.

Rnds 9 and 10: *K2tog; rep from * to end—5 sts rem after Rnd 10.

Break yarn, leaving a 10" tail. Thread tail on a tapestry needle, draw through rem sts twice, pull tight to close bottom of bag, and secure end to inside of bag. **I-cord trim:** With dpn and new ball of yarn, CO 3 sts. Using entire ball of yarn, work 2 pieces of 3-st I-cord (see page 00) each about 8 feet long. Exact lengths of

I-cord pieces are not critical; one piece is for the drawstring handle and the other for embellishment.

Finishing

Fold facing to WS along picot fold line. With yarn threaded on tapestry needle, sew down facing to WS of bag. Weave in loose ends. Sew one I-cord to body of bag, beg at center of bottom, coiling the I-cord around the bag in random squiggles as shown, and ending at one of the drawstring holes. **Felting:** Place bag and separate drawstring in net laundry bag and run through washer cycle using hot water and a small amount of mild detergent. Stop the washer periodically to check the progress of the felting, and run through more than one cycle if necessary to achieve the desired amount of felting. Allow bag and drawstring to air dry. Use dpn to open up drawstring holes if necessary. Fold the drawstring in half and thread through holes at top of bag. Tie ends of doubled drawstring together. ∞



RETRO STRIPES Katie Himmelberg, assistant editor

Finished Size About 12" across at widest point and 6½" from lower point to top opening, after fulling.

Yarn Cascade Yarns Cascade 220 (100% wool; 220 yd [201 m]/100 g): #8400 charcoal heather (MC), #7824 orange (A), #8229 aqua (B), 1 skein each.

Needles Size 7 (4.5 mm): straight and 2 double-pointed (dpn).

Notions Tapestry needle; markers

(m); 6 assorted wood beads with ¼" diameter holes.

Gauge 20 sts and 31 rows = 4" before fulling.

Side (make 2)

With MC and straight needles, CO 111 sts. **Set-up row:** (WS) P19, place marker (pm), [p37, pm] 2 times, p18. **Next row:** (RS) *Knit to 2 sts before m, sl 2 sts tog kwise, remove m, k1, p2sso, pm; rep from * 2 more times, knit to end—6 sts dec'd. Purl 1 WS row. **Note:** Colors change while bag shaping is still in progress; read the foll section all the way through before proceeding. Cont in St st, rep last 2 rows 8 more times, and *at the same time* change colors as foll: Work 4 rows with A, 4 rows with B, 4 rows with

A, work 4 rows with MC—57 sts rem; 19 rows completed, including set-up row; 5 stripes completed. Change to B and rep the last 2 rows once more—51 sts rem. *Next row:* (RS) Knit to first m, remove m, knit to 2 sts before center m, sl 2 sts kwise, remove m, k1, p2sso, pm, work to next m, remove m, knit to end—2 sts dec'd at center. Purl 1 WS row—6 stripes completed. Cont in St st, rep the last 2 rows 9 more times, and *at the same time* change colors as foll: Work 4 rows with A, 4 rows with B, 4 rows with MC, 4 rows with A, 2 rows with B—31 sts rem. With B, work 2 rows even to complete 4-row stripe, then BO all sts kwise on next RS row—11 stripes completed.

Handle

With dpn and B, CO 5 sts. Work I-cord (see page 6) for 12". BO all sts; break yarn, leaving an 8" tail.

Finishing

With yarn threaded on a tapestry needle, weave in ends. Sew sides and bottom of bag tog, leaving BO edges open at top. Lightly full bag and handle by hand in warm water using mild soap. Lay bag flat to dry, reshaping as necessary. When dry, sew one end of handle to top of one side seam. Thread yarn tail from other end of handle onto tapestry needle, string beads in desired order, and sew end of handle to top of other side seam. Weave in ends. ∞



FELTED SHORT-ROW BAG Meema Spadola, editorial advisor

Finished Size About 15" tall, 14" wide at top opening, and 13" wide across bottom.

Yarn Rio de la Plata Yarns Wool Solid (100% wool; 140 yd [128 m]/99 g): #A8 red brick (MC), 3 skeins; #A42 autumn leaf (CC), 1 skein.

Needles Size 13 (9 mm). Adjust needle size if necessary to obtain the correct gauge.

Notions Tapestry needle; size K/10½ (6.5 mm) crochet hook.

Gauge 10 sts and 14 rnds = 4" in St st with 2 strands of yarn held tog, before felting.

Note

Bag is worked with 2 strands of MC or 2 strands of CC held together throughout.

Bag

With 2 strands of MC held tog, CO 38 sts.

Rows 1–4: Work in St st (knit RS rows; purl WS rows), beg with a RS knit row and ending with a WS purl row.

Row 5: (RS) K14, BO center 10 sts for handle opening, work to end—14 sts rem each side.

Row 6: (WS) P14, use the backward loop method (see page 6) to CO 10 sts over gap in previous row, purl to end—38 sts.

Rows 7–10: Work in St st for 4 rows, ending with a WS row.

Row 11: (RS) Purl 1 RS row for fold line.

Rows 12–19: Work in rev St st (purl RS rows; knit WS rows).

Row 20: (WS) K14, BO center 10 sts for handle opening, work to end—14 sts rem each side.

Row 21: (RS) P14, use the backward loop method to CO 10 sts over gap in previous row, purl to end—38 sts.

Rows 22–31: Work in rev St st.

Rows 32–34: Change to CC and work in rev St st.

Cont in short-rows (see page 6) as foll:

Row 35: (RS) P28, wrap next st, turn.

Even-numbered Rows 36–44: (WS) Knit.

Row 37: P26, wrap next st, turn.

Row 39: P24, wrap next st, turn.

Row 41: P22, wrap next st, turn.

Row 43: P20, wrap next st, turn.

Row 45: (RS) Purl across all sts, working wrapped sts tog with their wraps as you come to them.

Row 46: (WS) Change to MC and knit across all sts.

Odd-numbered Rows 47–57: (RS) Purl.

Row 48: K28, wrap next st, turn.

Row 50: K26, wrap next st, turn.

Row 52: K24, wrap next st, turn.

Row 54: K22, wrap next st, turn.

Row 56: K20, wrap next st, turn.

Row 58: (WS) Knit across all sts, working wrapped sts tog with their wraps as you come to them.

Row 59: (RS) Change to CC and purl across all sts.

Row 60: (WS) K18, wrap next st, turn.

Odd-numbered Rows 61–67: (RS) Purl.

Row 62: K14, wrap next st, turn.

Row 64: K10, wrap next st, turn.

Row 66: K6, wrap next st, turn.

Row 68: (WS) Knit across all sts, working wrapped sts tog with their wraps as you come to them.

Row 69: (RS) Change to MC, p18, wrap next st, turn.

Even-numbered Rows 70–74: (WS) Knit.

Row 71: P14, wrap next st, turn.

Row 73: P10, wrap next st, turn.

Row 75: (RS) Purl across all sts, working wrapped sts tog with their wraps as you come to them.

Row 76: (WS) Knit across all sts.

Rows 77–85: Change to CC and work even in rev St st.

Rows 86–106: Change to MC and work even in rev St st.

Rows 107–116: Change to CC and work even in rev St st.

Rows 117–119: Change to MC and work even in rev St st.

Row 120: (WS) K28, wrap next st, turn.

Odd-numbered Rows 121–129: (RS) Purl.

Row 122: K26, wrap next st, turn.

Row 124: K24, wrap next st, turn.

Row 126: K22, wrap next st, turn.

Row 128: K20, wrap next st, turn.

Row 130: (WS) Knit across all sts, working wrapped sts tog with their wraps as you come to them.

Row 131: (RS) Change to CC and purl across all sts.

Even-numbered Rows 132–142: (WS) Knit.

Row 133: (RS) P28, wrap next st, turn.

Row 135: P26, wrap next st, turn.

Row 137: P24, wrap next st, turn.

Row 139: P22, wrap next st, turn.

Row 141: P20, wrap next st, turn.
 Row 143: (RS) Purl across all sts, working wrapped sts tog with their wraps as you come to them.
 Row 144: (WS) Change to MC, k18, wrap next st, turn.
 Odd-numbered Rows 145–149: (RS) Purl.
 Row 146: (WS) K14, wrap next st, turn.
 Row 148: K10, wrap next st, turn.
 Row 150: (WS) Knit across all sts, working wrapped sts tog with their wraps as you come to them.
 Row 151: (RS) Change to CC and purl across all sts.
 Even-numbered Rows 152–158: (WS) Knit.
 Row 153: (RS) P18, wrap next st, turn.
 Row 155: P14, wrap next st, turn.
 Row 157: P10, wrap next st, turn.
 Row 159: (RS) Purl across all sts, working wrapped sts tog with their wraps as you come to them.
 Rows 160 and 161: Work even in rev St st.
 Rows 162–171: Change to MC and work even in rev St st.
 Row 172: (WS) K14, BO center 10 sts for handle opening, work to end—14 sts rem each side.
 Row 173: (RS) P14, use the backward loop method to CO 10 sts over gap in previous row, purl to end—38 sts.
 Rows 174–177: Work even in rev St st.
 Row 178: (RS) Knit 1 RS row for fold line.
 Rows 179–190: Change to St st. Work 3 rows even.
 Row 180: (RS) K14, BO center 10 sts for handle opening, work to end—14 sts rem each side.
 Row 181: (WS) P14, use the backward loop method to CO 10 sts over gap in previous row, purl to end—38 sts.
 Rows 182–185: Work even in St st.
 BO all sts.

Finishing

Note: Decide whether you prefer the knit or purl side of the main fabric to be the outside of the bag. If you use the purl side (the RS of rev St st) for the outside of the bag, dotted lines will show on the outside of the bag along the color changes. For the bag pictured, we used the knit side (the WS of rev St st) for the outside of the bag. Fold the facings at each end of the bag to the knit side of the main fabric along the fold lines, matching the slit openings for the handles. With 2 strands of MC threaded on a tapestry needle, whipstitch (see page 6) all the way around the edges of each handle opening, joining the two layers of fabric. With 2 strands of MC threaded on a tapestry needle, sew facings in place along CO and BO edges. Fold bag in half with your chosen side facing outwards. With outside of bag still facing you, use crochet hook and 2 strands of MC to seam each side of bag using single crochet (sc; see page 6), working crochet through both layers. If desired, turn bag inside out and use 2 strands of MC threaded on a tapestry needle to sew short diagonal seams as shown in Bag Construction (on page 6) to create bottom gussets. Weave in ends.
Felting: Felt bag in top loading washer on hot cycle with a little soap. Stop the washer periodically to check the progress of the felting, and remove the bag during spin cycles to prevent it from becoming misshapen or creased. Depending on the water conditions, soap, and your washer, it may take more than one cycle to achieve the desired amount of felting. When bag has felted enough, remove from washer, pull into shape, and allow to dry flat. ∞



HALTER BAG Lisa Shroyer, project editor

Finished Size About 14½" tall and 11" wide at top opening, not including straps, after fulling.

Yarn Halcyon Yarns Botanica (100% wool; 160 yd [146 m]/113 g): #43 gold, #47 olive, #23 pink, #3 white, 1 skein each.

Needles Size 7 (mm): 16" circular (cir) and set of 2 double-pointed (dnp). Adjust needle size if necessary to obtain the correct gauge.

Notions Marker (m); tapestry needle.

Gauge 18 sts and 25 rnds = 4" in St st colorwork patt from chart, before fulling.

Notes

For slipstitch pattern that forms vertical stripes, slip stitches as if to purl with yarn in back.

To reduce the number of ends to weave in, carry the unused colors vertically up the inside of the bag until they are needed again, trapping the strands against the wrong side of the bag by twisting them with the working yarn every few rounds.

Bag

With olive, CO 105 sts. Place marker (pm) and join for working in the rnd, being careful not to twist sts. [Purl 1 rnd, knit 1 rnd] 2 times—2 garter ridges completed.

Rnd 1: With gold, *[sl 1, k] 4 times, sl 1, k12; rep from * to end of rnd.

Rnd 2: With pink, rep Rnd 1.

Rnds 3 and 4: With olive, *[k1, sl 1] 4 times, k13; rep from * to end of rnd.

Rnd 5: With white, rep Rnd 1.

Rnd 6: With gold, rep Rnd 2.

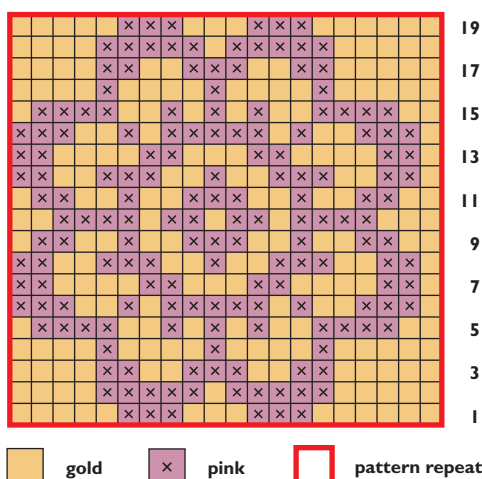
Rnds 7 and 8: With olive, rep Rnds 3 and 4.

Rnds 9 and 10: Using pink for both rnds, rep Rnds 1 and 2.

Rnds 11 and 12: With olive, rep Rnds 3 and 4.

Rnd 13: With white, rep Rnd 1.

Flower



Rnd 14: With pink, rep Rnd 2.
 Rnds 15 and 16: With olive, rep Rnds 3 and 4.
 Rnds 17 and 18: Using gold for both rnds, rep Rnds 1 and 2.
 Rnds 19 and 20: With olive, rep Rnds 3 and 4.
 Rnds 21–24: Using the colors originally given for these rnds, rep Rnds 1–4.
 Rnds 25 and 26: Using white for both rnds, rep Rnds 1 and 2.
 Rnds 27 and 28: With olive, rep Rnds 3 and 4.
 Rnd 29: With gold, rep Rnd 1.
 Rnd 30: With white, rep Rnd 2.
 Rnds 31 and 32: With olive, rep Rnds 3 and 4.
 Rnds 33 and 34: Using pink for both rnds, rep Rnds 1 and 2.
 Rnds 35 and 36: With olive, rep Rnds 3 and 4.
 Rnds 37–44: Using the colors originally given for these rnds, rep Rnds 1–4 two times.
 Rnds 45 and 46: Using gold for both rnds, rep Rnds 1 and 2.
 Rnds 47 and 48: With olive, rep Rnds 3 and 4.
 Rnd 49: With white, rep Rnd 1.
 Rnd 50: With pink, rep Rnd 2.
 Rnd 51: With olive, *[k1, sl 1] 4 times, k6, k2tog, k5; rep from * to end of rnd—100 sts.
 Rnd 52: With olive, *[k1, sl 1] 4 times, k12; rep from * to end of rnd—piece measures about 6" from CO, measured straight up a single column of sts in a slipstitch section; the St st striped sections will be gently ruched.
 Rnds 53–56: *K1 with olive, k1 with gold; rep from * to end of rnd.
 Rnds 57 and 58: With gold, knit 2 rnds.
 Rnd 59: *K1 with olive, k7 with gold, k12 with olive; rep from * to end of rnd.
 Rnds 60 and 61: With gold, knit 2 rnds.
 Rnds 62–80: Work Rnds 1–19 of Flower chart (see page 3) in stranded 2-color St st.
 Rnds 81–83: With gold, knit 3 rnds.
 Work Rnds 84–88 with olive as foll:
 Rnds 84 and 85: Knit 2 rnds.
 Rnd 86: *K18, k2tog; rep from * to end of rnd—95 sts rem.
 Rnd 87: *K17, k2tog; rep from * to end of rnd—90 sts rem.
 Rnd 88: *K16, k2tog; rep from * to end of rnd—85 sts rem.
 Work Rnds 89–95 using pink as foll:
 Rnd 89: *K15, k2tog; rep from * to end of rnd—80 sts rem.
 Rnd 90: *K14, k2tog; rep from * to end of rnd—75 sts rem.
 Rnd 91: *K13, k2tog; rep from * to end of rnd—70 sts rem.
 Rnd 92: *K12, k2tog; rep from * to end of rnd—65 sts rem.
 Rnd 93: *K11, k2tog; rep from * to end of rnd—60 sts rem.
 Rnd 94: *K10, k2tog; rep from * to end of rnd—55 sts rem.
 Rnd 95: *K9, k2tog; rep from * to end of rnd—50 sts rem.
 Work to end with gold as foll:
 Rnd 96: *K8, k2tog; rep from * to end of rnd—45 sts rem.
 Rnd 97: *K7, k2tog; rep from * to end of rnd—40 sts rem.
 Rnd 98: *K6, k2tog; rep from * to end of rnd—35 sts rem.
 Rnd 99: *K5, k2tog; rep from * to end of rnd—30 sts rem.
 Rnd 100: *K4, k2tog; rep from * to end of rnd—25 sts rem.
 Rnd 101: *K3, k2tog; rep from * to end of rnd—20 sts rem.
 Rnd 102: *K2, k2tog; rep from * to end of rnd—15 sts rem.
 Rnd 103: *K1, k2tog; rep from * to end of rnd—10 sts rem.
 Break yarn, leaving a 10" tail. Thread tail on a tapestry needle, draw through rem sts twice (drawstring-fashion), pull tight to close bottom of bag. Secure end to inside of bag.

Finishing

Straps: Using dpn and colors of your choice, work two 5-st I-cords (see page 6) each 18" long; straps shown are olive and gold. With yarn threaded on a tapestry needle, sew the end of one handle to top edge in the center of a St st stripe section. Sew one end of the second strap to the center of the next stripe section to the left of the section where the first strap is attached. Counting to the left or right from either strap, skip one stripe section, and mark the center of the foll stripe section. Sew the rem ends of both straps side-by-side to the marked position. Weave in ends. Fill a sink with hot water and full bag lightly by hand; stitches should still be fairly distinct. Allow to dry completely. ∞

STAR BAG

Ann Budd, book editor



Finished Size 14" wide and 13" tall, not including handle.

Yarn Mountain Colors Moguls (96% wool, 4% nylon; 65 yd [59 m]/100 g): Indian corn (red multi), wilderness (green multi), and elderberry (purple multi), 1 skein each.

Needles Size 11 (8 mm): 24" circular (cir) and 2 double-pointed (dpn).

Notions Markers (m); tapestry needle; 6½" bamboo handle (item HB-AT17-Burnt) and two ¾" handle hooks (item HK-R34-NKL, both available from Universal

Mercantile Exchange, www.umei.com).

Gauge 12 sts and 16 rows = 4" in St st.

Strap

With red multi and dpn, CO 3 sts. Work I-cord (see page 6) for 3". Change to St st and work 3 rows even. *Inc row:* K1, M1 (see page 6), knit to last st, M1, k1—2 sts inc'd. Rep the last 4 rows 2 more times—9 sts. Mark each end of last row completed with removable markers or waste yarn. Cont even in St st until piece measures 32" from last inc row (about 37" from CO). Mark each end of last row completed with removable markers or scrap yarn. *Dec row:* K2, ssk (see page 6), k1, k2tog, k2—7 sts rem. Work 3 rows even. *Next row:* K1, ssk, k1, k2tog, k1—5 sts rem. Work 3 rows even. *Next row:* Ssk, k1, k2tog—3 sts rem. With these 3 sts, work I-cord for 3". BO all sts.

Front

With purple, cir needle, and RS facing, pick up and knit 118 sts evenly spaced along one selvedge of straight 32" section of strap between the markers; do not pick up any sts along the inc or dec sections, or along the I-cord at each end. Do not join. *Next row:* (WS) K4 (edge sts; knit every row), place marker (pm), *k22, pm; rep from * 4 more times, k4 (edge sts; knit every row). *Dec row:* K4, sl marker (sl m), *knit to 2 sts before next m, ssk, sl m, k2tog; rep from * 3 more times, knit to end—8 sts dec'd. Purl 1 WS row. *Note:* Colors change while bag shaping is still in progress; read the next sections all the way through before proceeding.

Cont in established patts, rep last 2 rows 8 more times, then work 2 rows even and *at the same time* change colors as foll: work 8 rows of purple, 5 rows of green, 3 rows of red, 2 rows of purple—46 sts rem. Change to green, and work RS dec row once more—38 sts rem. Turn bag inside out. Divide sts evenly on two separate dpn (19 sts on each dpn) and hold bag so right sides of fabric are touching. With cir and using the three-needle method (see page 6), BO rem sts tog.

Back

With green, cir needle, and RS facing, pick up and knit 118 sts evenly spaced along rem selvedge of straight 32" section of strap between markers. Do not join. Work first 2 rows and dec row as for front—8 sts dec'd. Purl 1 WS row. *Note:* Colors change while bag shaping is still in progress; read the next section all the way through before proceeding. Cont in established patts, rep the last 2 rows 8 more times, then work 2 rows even, and *at the same time* change colors as foll: work 8 rows of green, 5 rows of purple, 3 rows of red, 2 rows of green—46 sts rem. Change to purple and work RS dec row once more—38 sts rem. BO sts tog as for front.

Finishing

With yarn threaded on a tapestry needle, weave in loose ends. Fold I-cords at each end of strap in half to form loops and sew securely to beg of St st section. Wash vigorously in hot soapy water until bag felts slightly. Use handle hooks to attach bamboo handle to I-cord loops. ∞



FAIR ISLE BAG Mary Jane Mucklestone

Finished Size About 10¼" wide and 11½" high, not including strap.

Yarn Dale of Norway Heilo (100% wool; 109 yd [100 m]/50 g): #5762 pewter (steel gray), #7032 seafoam (light sage), #8972 olive, and #5813 light blue, 1 skein each.

Needles Size 5 (3.75 mm) and 4 (3.5 mm): 24" (60 cm) circulars (cir). Adjust needle size if necessary to obtain the correct gauge.

Notions Tapestry needle; markers (m); stitch holder.

Gauge 24 sts and 26 rows = 4" in St st colorwork patts from charts.

Note

Colors are shown on the charts as simply dark or light. Always use pewter or olive for the dark color, and seafoam or light blue for the light color. The directions below indicate where to use each color.

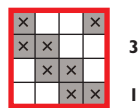
Bag

With pewter and larger needle, CO 128 sts. Place marker (pm), and join for working in the rnd, being careful not to twist sts.

Rnd 1: Knit.

Rnd 2: *K12 for short side, pm, k2 for dark color column, pm, k48 for long side, pm, k2 for dark color column, pm; rep from * once

Diagonal



Lice Stitch



⊗ dark

□ light

□ pattern repeat

more, omitting final m because end-of-rnd m is already in place.

Rnd 3: Join seafoam for light color, and using pewter for dark color, establish patt from Lice Stitch chart as follows: *Work lice stitch patt over 12 sts, slip marker (sl m), k2 with pewter, sl m, work lice stitch patt over 48 sts, sl m, k2 with pewter, sl m; rep from * once more.

Rnds 4–12: Cont in established patt, working 2-st solid color columns in pewter—10 rnds completed from Lice Stitch chart.

Rnd 13: Knit 1 rnd with pewter, slipping markers as you come to them.

Rnd 14: Change to olive (dark) and light blue (light). Establish patt from charts as follows: *Work lice st patt over 12 sts, sl m, k2 with olive, sl m, work diagonal patt over 48 sts, sl m, k2 with olive, sl m; rep from * once more.

Rnds 15–64: Cont in establish patt, working 2-st solid color columns in olive, and ending with Rnd 3 of Diagonal chart—51 rnds completed from Diagonal chart.

Rnd 65: Change to pewter and knit.

Rnds 66–75: Change to seafoam (light) and pewter (dark), and rep Rnds 3–12 once more—10 rnds completed from Lice Stitch chart.

Rnd 76: Knit with pewter.

Rnd 77: Purl 1 rnd with pewter for fold line. Change to smaller needle.

Rnds 78–81: Knit with pewter.

Rnds 82–89: Knit with olive—12 rnds completed from fold line for top facing.

BO all sts.

Strap

With pewter, smaller needle, and RS facing, pick up and knit 1 st from purled fold line above the second st in a solid-color column, then pick up and knit 13 sts from fold line above a 12-st lice patt side panel, then pick up and knit 1 st from purled fold line above the first st of the next solid color column—15 sts total centered on lice stitch side panel. *Next row:* (WS) Sl 1 pwise, *p1, k1; rep from * to end. *Next row:* (RS) Sl 1 pwise, *k1, p1; rep from * to last 2 sts, k2. Rep the last 2 rows until strap measures 26" from pick-up row. Break yarn and place sts on holder. With RS of bag facing, using pewter and smaller needle, pick up and knit 15 sts centered on lice stitch panel at other side of bag in the same manner as the strap pick-up. Place held strap sts on other end of cir needle and hold needle tips parallel, being careful not to twist strap. With yarn threaded on a tapestry needle, use Kitchener stitch (see page 6) to graft live sts at end of strap to sts picked up from second side of bag.

Finishing

Steam-block thoroughly. Fold facing to inside of bag along fold line. With yarn threaded on a tapestry needle, sew facing invisibly in place. Turn bag inside out, and flatten so ends of strap are centered on folds at each side. Sew straight across bottom seam using backstitch (see page 6). If desired, sew short diagonal seams as shown in Bag Construction (on page 6) to create bottom gussets. Weave in ends. ∞

Short Rows: Wrapping a Stitch



Figure 1



Figure 2

Work to turn point, slip next stitch purlwise to right needle. Bring yarn to front (Figure 1). Slip same stitch back to left needle (Figure 2). Turn work and bring yarn in position for next stitch, wrapping the stitch as you do so. *Note:* Hide wraps in a knit stitch when right side of piece is worked in a knit stitch. Leave wrap if the purl stitch shows on right side. Hide wraps as follows: *Knit stitch:*

On right side, work to just before wrapped stitch. Insert right needle from front, under the wrap from bottom up, and then into wrapped stitch as usual. Knit them together, making sure new stitch comes out under wrap. *Purl stitch:* On wrong side, work to just before wrapped stitch. Insert right needle from back, under wrap from bottom up, and put on left needle. Purl them together.

Whipstitch

With right side of work facing and working one stitch in from the edge, bring threaded needle out from back to front along edge of knitted piece.



Single Crochet (sc)



Figure 1



Figure 2

Insert hook into an edge stitch, yarn over hook and draw a loop through stitch, yarn over hook (Figure 1) and draw it through both loops on hook (Figure 2).

Three-Needle Bind-Off

Place stitches to be joined onto two separate needles. Hold them with right sides of knitting facing together. Insert a third needle into first stitch on each of the other two needles and knit them together as one stitch.



*Knit next stitch on each needle the same way. Pass first stitch over second stitch. Repeat from * until one stitch remains on third needle. Cut yarn and pull tail through last stitch.

Bag Construction

Turn bag inside out and flatten piece so that bottom seam is facing you. Sew a short seam across each corner to form gussets.



I-Cord



With double-pointed needle, cast on desired number of stitches. *Without turning the needle, slide the stitches to other end of the needle, pull the yarn around the back, and knit the stitches as usual; repeat from * for desired length.

Raised (M1) Increases

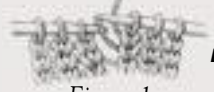


Figure 1

Left Slant (M1L)



Figure 2

With left needle tip, lift strand between needles from front to back (Figure 1). Knit lifted loop through the back (Figure 2).



Figure 1

Right Slant (M1R)



Figure 2

With left needle tip, lift strand between needles from back to front (Figure 1). Knit lifted loop through the front (Figure 2).

Ssk Decrease



Figure 1



Figure 2

Slip two stitches knitwise one at a time (Figure 1). Insert point of left needle into front of two slipped stitches and knit them together through back loops with right needle (Figure 2).

Backward Loop Cast-On

*Loop working yarn and place it on needle backward so that it doesn't unwind. Repeat from *.



Backstitch Seam

Working from right to left, one stitch in from selvedge, bring threaded needle up through both pieces of knitted fabric (Figure 1), then back down through both layers a short distance (about a row) to the right of the starting point (Figure 2). *Bring needle up through both layers a row-length to the left of backstitch just made (Figure 3), then back down to the right, in same hole used before (Figure 4). Repeat from *, working backward one row for every two rows worked forward.



Figure 1



Figure 2



Figure 3



Figure 4

Kitchener Stitch

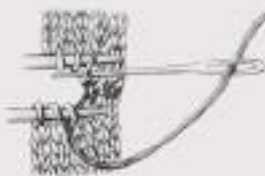
Step 1: Bring threaded needle through front stitch as if to purl and leave stitch on needle.

Step 2: Bring threaded needle through back stitch as if to knit and leave stitch on needle.

Step 3: Bring threaded needle through same front stitch as if to knit and slip this stitch off needle. Bring threaded needle through next front stitch as if to purl and leave stitch on needle.

Step 4: Bring threaded needle through first back stitch as if to purl (as illustrated), slip this stitch off, bring needle through next back stitch as if to knit, leave this stitch on needle.

Repeat Steps 3 and 4 until no stitches remain on needles.





RISK-FREE TRIAL OFFER

Discover knitwear designs that will capture your imagination.

You don't have to be a designer or a knitting pro to make beautiful knitted garments and accessories, and you don't have to hunt all over for inspiring designs.

From cover to cover, *Interweave Knits* magazine gives you great projects, from the beginner to the advanced. Every issue is packed full of captivating smart designs, step-by-step instructions, easy-to-understand illustrations, plus well-written, lively articles sure to inspire.

Take advantage of this special risk-free offer today!

www.interweave.com/go/knitsJPDP6